

# WEITZER SUBDIVISION P.U.D. PLAT NO. TWO (MOON LAKE P.U.D.)

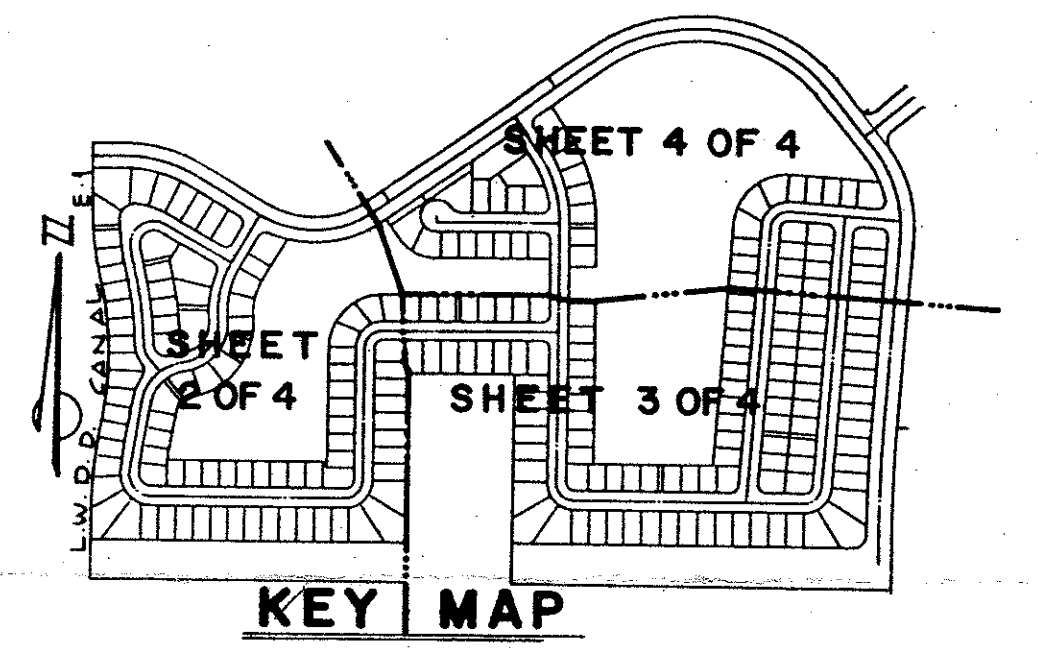
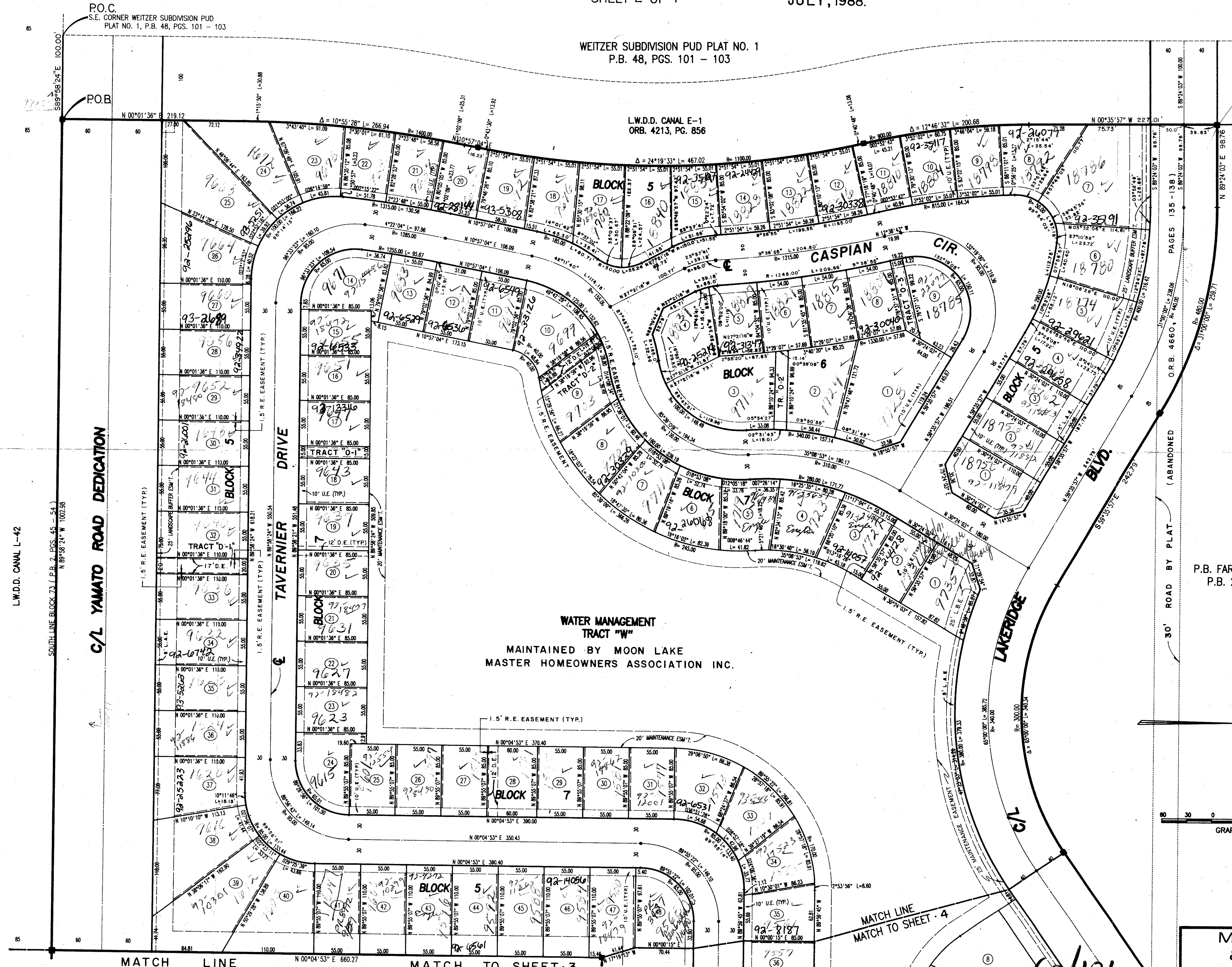
A REPLAT OF A PORTION OF BLOCK 73, PALM BEACH FARMS PLAT NO. 3, PLAT BOOK 2,  
PAGES 45 - 54, IN THE S. 1/2 OF SECTION 6 & THE N. 1/2 OF SECTION 7,  
TWP. 47 S. - RGE. 42 E., PALM BEACH COUNTY, FLORIDA  
SHEET 2 OF 4  
JULY, 1988.

# 181

STATE OF FLORIDA  
COUNTY OF PALM BEACH  
This Plat was filed for record at  
M. this day of 19  
and duly recorded in Plat Book No.  
on Page  
John B. Dunkle, Clerk Circuit Court  
By D.C.

WEITZER SUBDIVISION PUD PLAT NO. 1  
P.B. 48, PGS. 101 - 103

L.W.D.D. CANAL E-1  
ORB. 4213, PG. 856



P.B. FARMS CO. PLAT NO. 3  
P.B. 2, PGS. 45 - 54

GRAPHIC SCALE 1"=60'

0349-002

MICHAEL B. SCHORAH  
& ASSOCIATES, INC.  
ENGINEERS • PLANNERS • DEVELOPMENT CONSULTANTS

TEL. (305) 968-0080  
1850 FOREST HILL BLVD., SUITE 205  
WEST PALM BEACH, FLORIDA 33406

60/181  
WEITZER SUB PUD #2

AMERICAN HOMES AT BOCA RATON  
P.B. 36, PGS. 68 - 69

L.W.D.D. CANAL L-42

C/L YAMATO ROAD DEDICATION

SOUTH LINE BLOCK 73 (P.B. 2, PGS. 45 - 54)  
N 89°58'24" W 1002.98

POB

P.O.C.  
S.E. CORNER WEITZER SUBDIVISION PUD  
PLAT NO. 1, P.B. 48, PGS. 101 - 103

MATCH LINE  
MATCH TO SHEET 3

MATCH LINE  
MATCH TO SHEET 4